



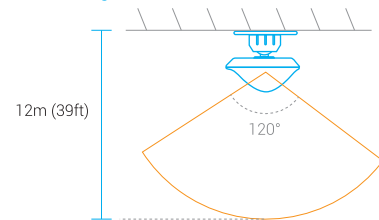
Alarm Sensor Installation Guide

Alarm Sensors

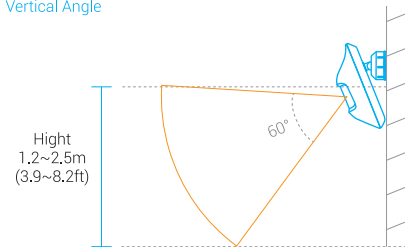
PIR Movement Sensor

► 1. PIR Triggering Range

Horizontal Angle



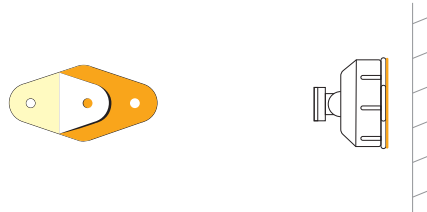
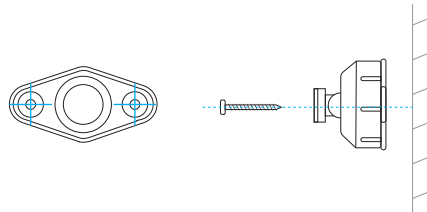
Vertical Angle



1

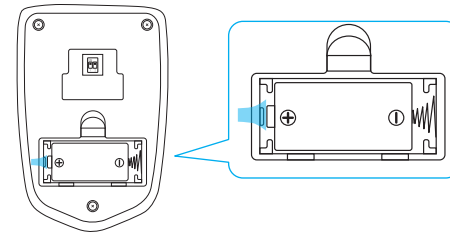
► 2. Install PIR Movement Sensor

a). Install the bracket by screws or Stick the 3M mouting tape between the bracket and the wall.

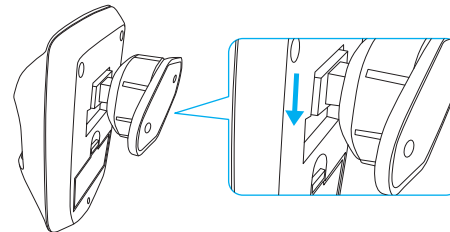


2

b). Remove the spacer from the battery.

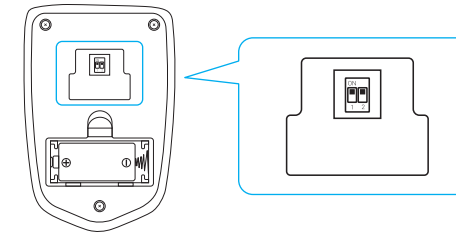


c). Insert the mounting bracket at the top of the movement sensor. Push the movement sensor down until it clicks into place



3

► 3. Sensitivity Setup:



In default, the sensitivity is set high. You may change it at the back of the PIR.

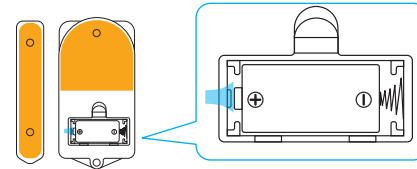
Sensitivity	1	2
High	ON	ON/OFF
Medium	OFF	ON
Low	OFF	OFF

4

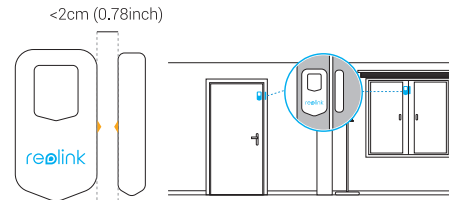
Window/Door Sensor:

Installation:

a). Stick the 3M Mounting Tape on the sensors and remove the spacer from the battery.



b). Tear off the tape paper and stick the sensors on the doors and windows

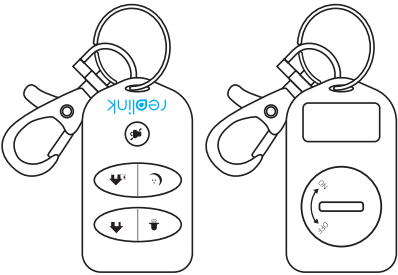


Tips: The sensors should be installed less than 2cm (0.78inch) between and make sure the triangle marks at the side of the sensors should be on the same line.

5

Key Fob Remote Control

Take it and you may switch the alarm mode or disarm the sensors remotely.



- Trigger Alarm manually
- Switch to Alarm Mode (HOME)
- Switch to Alarm Mode(SLEEP)
- Switch to Alarm Mode(OUT)
- Disarm alarm sensors for 30s

6

Specification

ITEM \ ALARM SENSOR			
Detecting Mode	infrared	N/A	N/A
Detecting distance	12m	N/A	N/A
Detecting angle	HA:120° VA: 60°	N/A	N/A
Transmitting frequency	433MHz	433MHz	433MHz
Induction Gap	N/A	5.5cm	N/A
Transmitting distance	200m(in open space)	100m(in open space)	100m(in open space)
Standby current	<30uA	<10uA	<10uA
Operating Voltage	3V	3V	3V
Battery Type	CR123A	CR123A	CR2032
Battery Voltage	3V	3V	3V
Threshold Voltage	1.8V~2.3V	1.6V~2.3V	1.6V~2.3V
MAX voltage	3.3V	3.3V	3.3V
Working Temperature	-10°~+55°(14°F~131°F)	-10°~+55°(14°F~131°F)	-10°~+55°(14°F~131°F)
Working Humidity	10%~90%	10%~90%	10%~90%

7

Tips

a). Installation:

SENSOR ITEM	PIR	Door Sensor	Remot Control	Siren
Walls material	bricks	bricks	bricks	bricks
Walls between DVR and sensor	3	2	2	3
Distance between DVR and sensor	45m(145ft)	15m(50ft)	15m(50ft)	45m(145ft)

b). Battery Out of Power Warning:

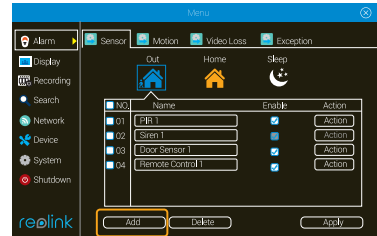
PUSH notification, EMAIL alert will be sent and ERROR page will be popped up on monitor when the battery voltage is lower than 2.3V. Sensors will not work if battery voltage is lower than 1.8V.

c). Add Alarm Sensors:

If any sensor is not seen from the DVR Alarm Page, we may Add it to the system:

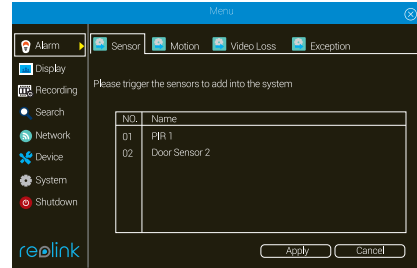
- Go to Page ALARM → SENSOR, and click ADD.

Note: Each sensor can setup different ACTIONS, including BUZZER, SIREN, PUSH, RECORDING and EMAIL.



8

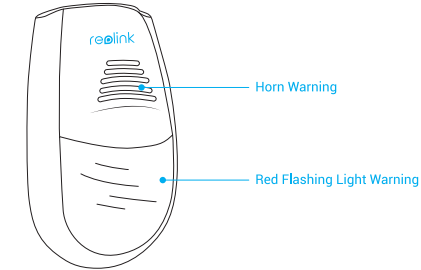
- Trigger the Alarm Sensors to add.
- PIR Movement Sensor: Move in front of the sensor
- Window/Door Sensor: Separate the sensors
- Key Fob Remote Control: Press any key



9

Siren

The system does not come with Siren, Please contact support@reolink.com for purchase link.



10



Welcome to Reolink

Get Support:

For technical support, you may send E-mail to support@reolink.com or troubleshoot from <https://reolink.com/faqs/>.

Reolink Digital Technology Co.,Ltd
<https://reolink.com>

11