

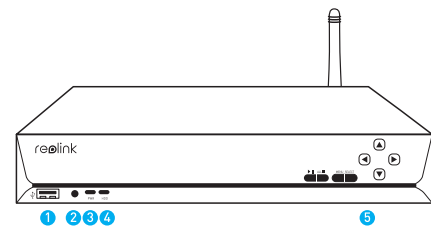


Hardware Quick Start Guide

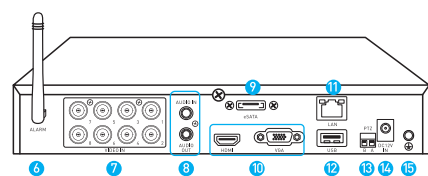
Smart DVR System

1

Get Started to Know your DVR



- 1): USB(Mouse) 3): Power LED 5): Control Panel
2): IR Receiver 4): HDD LED

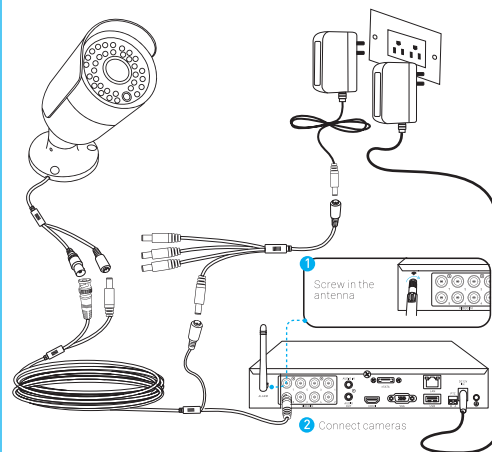


- 6): Antenna 9): e-SATA 11): Lan Port 14): Power DC-in
7): Video In 10): Video Output (HDMI/VGA)
8): Audio Input/Output 12): USB Port 15): Ground
13): RS485

1

A: Connect your antenna and cameras to DVR

1. Screw in the antenna to your DVR
2. Connect cameras to your DVR
3. Power On the devices

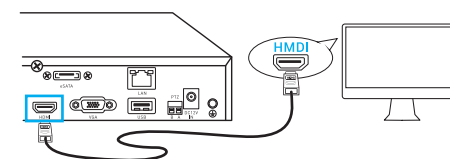


2

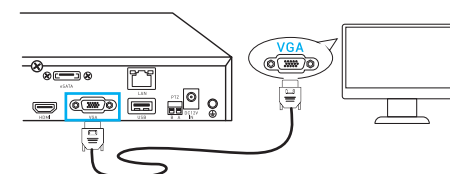
Get Started to Hook Up DVR and Cameras

B: Connect your DVR to a HD TV/monitor

HDMI: Allow you to connect your DVR to a TV via a HDMI cable.



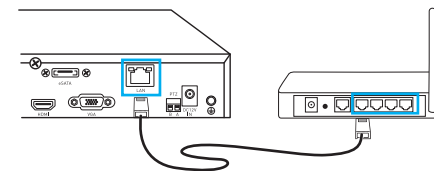
VGA: Allow you to connect your DVR to a monitor via a VGA cable.



2

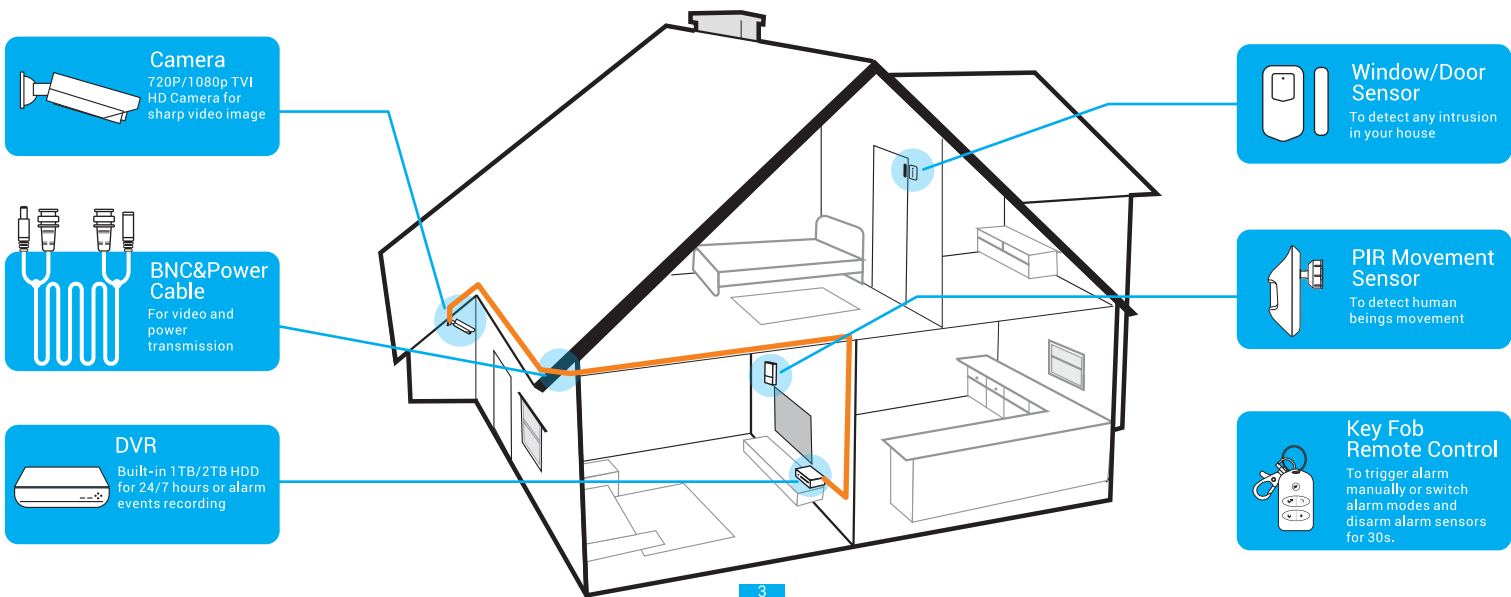
C: Connect your DVR to network

If you want a remote access via your phone/tablet/PC, you need to connect the DVR to the router.



3

Get Started to Install Whole System

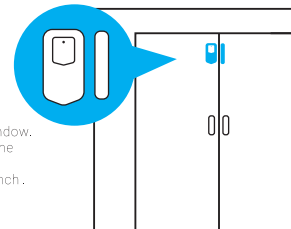


4

Get Started to Install Sensors

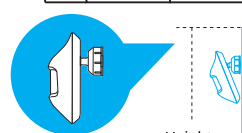
1.Window/Door Sensor

Stick the sensor to a door or window. It will be triggered when someone opens the door or window and separate the sensor 4cm/1.57inch.



2.PIR Movement Sensor

Install the bracket and mount it on the wall. Human beings will trigger the sensor in its effective range. The central angle range of the PIR is 120°, and longest detecting distance is 12m.



Height
1.5m~2.5m
4.9ft~8.2ft

Key Fob Remote Control

Control at your fingertips with the ability to turn the alarm on/off and switch alarm modes using the key fob controller.

*All alarm sensors have been added to the DVR system in factory.

4

5

Installation Tips

Lighting

Camera:

- For best results do not point the camera towards a light source.
- Pointing the camera towards a glass window intending to see outside may result in a poor image because of glare and lighting conditions inside and outside.
- Don't place the camera in a shaded area that is looking into a well-lit area as this will result in a poor display. The light to the sensor located at the front of the camera needs to be the same as the light at the focal target for best results.
- As the camera uses infrared LEDs to see at night, it's recommended to clean the lens from time to time if the picture degrades.

Alarm Sensors:

- Install the PIR on the indoor wall between 1 to 2.5 meters high.
- Install the Door Sensors to doors or windows to alarm when someone open the door or window.
- Carry on the Key Fob Remote Control to switch the alarm modes among HOME/OUT/SLEEP remotely.

Environment

- Make sure the power connections are not directly exposed to water or moisture and shielded from other outdoor elements.
- Weatherproof only means that the camera can be exposed to weather such as rain and snow. Weatherproof cameras cannot be submerged under water.
- Do not expose the camera where rain and snow will hit the lens directly.
- Cameras geared for cold weather may work in extreme conditions as low as -25° as the camera produces heat when plugged in.

Alarm Sensors Installation Tips

Below is the working distance test report from reolink engineers:

ITEM	SENSOR	PIR	Door sensor	Remot Control	Siren
Walls material		bricks	bricks	bricks	bricks
Walls between DVR and sensor		3	2	2	3
Distance between DVR and sensor		45m(145ft)	15m(50ft)	15m(50ft)	45m(145ft)

*The system does not come with Siren. If any need, please kindly contact support@reolink.com for more information and purchase.

6



Software Quick Start Guide

Smart DVR System

Start by Local Monitor

► 1. Local Settings via Wizard on Monitor

During the startup, you will see the below splash screen on monitor. System booting up takes a few seconds and you will get Setup Wizard.

Setup Wizard

Please Create a password using at least 6 characters.

User Name: admin

Password: *****

Confirm Password: *****

Level: Admin

Enable Password: ☒

☐ Display wizard when booting up

Next

Going through the Wizard, we can do below settings:

1. Create your own Password. (It can be composed of 6~31 characters without space at the beginning or end)
2. Setup Display Resolution, Time Zone, Name
3. Format HDD. (Hard Drive was formatted before packing in factory)
4. Setup Network. (DHCP and AUTO DNS are recommended)
5. Email Setup. (Sender Address and Recipient Address can be the same, but you should have the correct password)
6. Alarm Sensor List. (You may check whether all of the sensors are added to the system, including 2xPIR, 3xKey Fob Remote Control, and 3xDoor Sensors)

1

► 2. Get to Know Alarm Setup Page

Menu

Alarm: Sensor, Motion, Home, Sleep, Exception

Recording: Search, Network, Device, System, Shutdown

Out: Home, Sleep

NO: 01 PIR 1, 02 Siren 1, 03 Door Sensor 1, 04 Remote Control 1

Enable: ☒ ☒ ☒ ☒

Action: Action, Action, Action, Action

Add, Delete, Apply

In this page, you may:

1. See all the alarm sensors
2. Setup different Actions for different alarm sensors, including BUZZER WARNING, EMAIL, RECORDING, etc.
3. Setup different Actions for different alarm modes, including HOME/OUT/SLEEP, which can be switched from Key Fob Remote Control.

Sensor Default Settings:

SENEOR MODE	PIR Movement Sensor	Window Door Sensor	Key Fob Remote Control
Home	Disabled	Disabled	Enabled
Out	Enabled	Enabled	Enabled
Sleep	Disabled	Disabled	Enabled

2

Action

Buzzer: ☒ Siren: ☒

Channel: All 1 2 3 4 5 6 7 8

Alarm Channel: ☒ Push: ☒ Trigger Recording: ☒ Send Email: ☐

Email Settings

Default, Apply, Cancel

Action Default Settings:

ACTION MODE	Buzzer	Siren	Alarm Channel	Push	Trigger Recording	Send Email
Home	Disabled	Disabled	All Channels	Enabled	Enabled	Disabled
Out	Enabled	Enabled	All Channels	Enabled	Enabled	Disabled
Sleep	Disabled	Disabled	All Channels	Disabled	Enabled	Disabled

1. Buzzer: Beep in DVR
2. Siren: Sound from Siren (need to buy separately from reolink)
3. Alarm Channel: The channels selected to send PUSH/RECORDING/SEND EMAIL below.
4. Push: Push notification from all channels selected to Phone.
5. Trigger Recording: Record all channels selected.
6. Send Email: The first channel selected to send email alert. (e.g.: Select 1,2,3, channel 1 will send email alert, if 2,3,4, channel 2 will.)

3

Reomote Access by Smart Device

► 1. Install Reolink App

Search "Reolink" in App Store or Google Play, or just Scan the QR code below to download and install the app.



After downloading finished, install and launch the app.



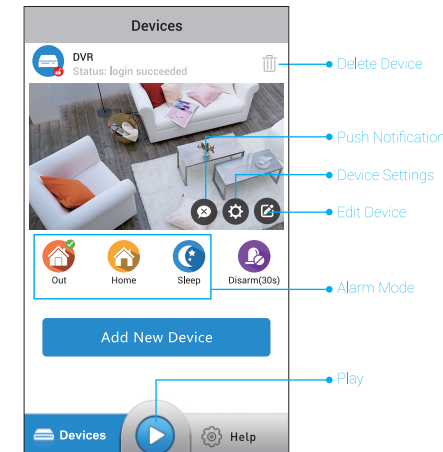
4

► 2. Add Devices in Local Network

The DVR can be added by LAN search (the app will automatically add the device) or by scanning the QR code (in different networks).

LAN Search

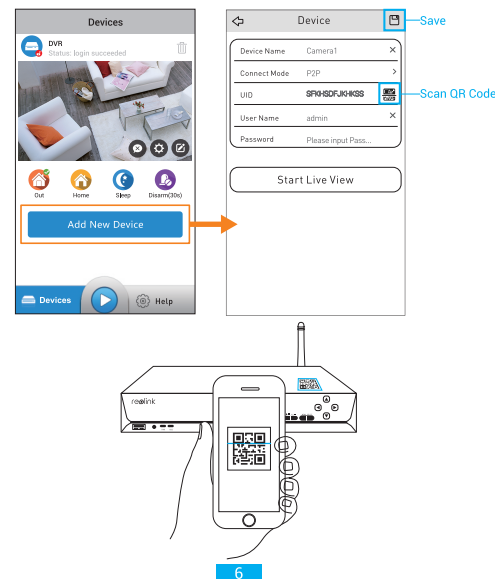
1. Connect your smart phone to home Wi-Fi network.
2. Launch Reolink App, and it will automatically show the DVR searched in your LAN (Local Area Network).



5

► 3. Add Devices in Different Networks

You may find the UID QR code on the cover of the DVR box, which features 16 alphanumeric characters. Scan the UID code with your mobile device.



Remote Access by Computer

► 1. Add Devices in Lan Networks

To manually add a device, please follow the steps:

1. Click the Add Device button.
2. Click Scan Device in LAN.
3. Double click on the device you want to add. The information will be filled in automatically.
4. Input the password you set in the Wizard.
5. Click OK to login.

Network Surveillance

Add Device

Device Basic Information

Device Name: DVR1 Media Port: 8000

Register Mode: IP Address: 192.168.10.10

User Name: admin Password: *****

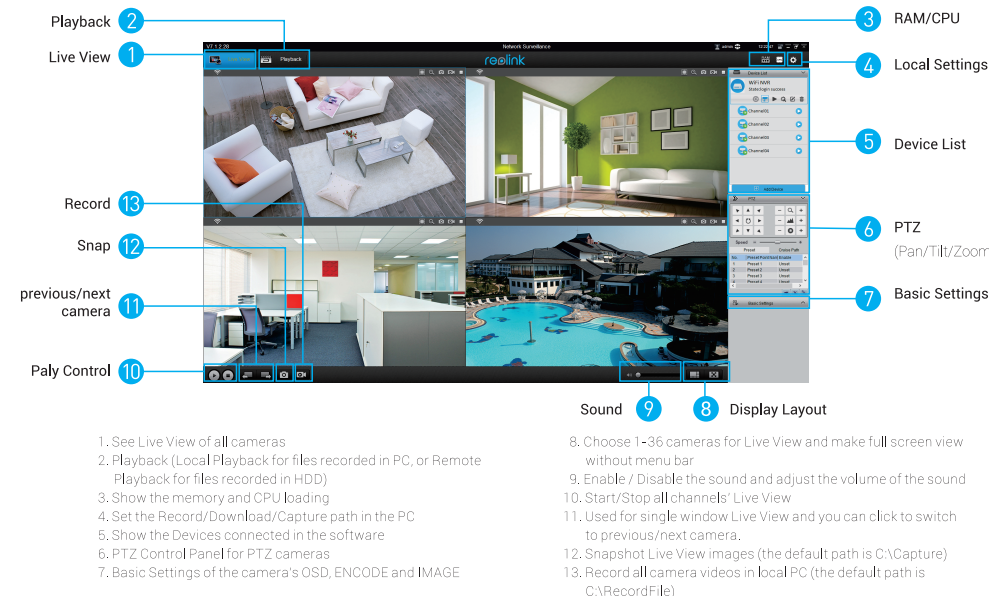
Scan Device in LAN

OK, Cancel

1, 2, 3, 4

7

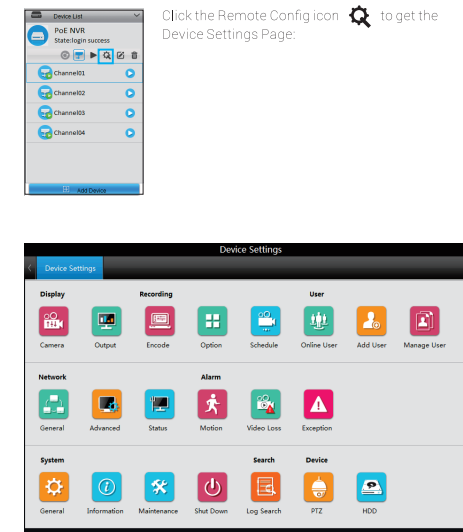
Client User Interface



8

► 3. Remote Device Setting

Click the Remote Config icon to get the Device Settings Page:



Welcome to Reolink

To get started, please follow the Quick Start Guide to set up the Reolink mobile app, Client software and hardware.

Get Support:

For technical support, you may send E-mail to support@reolink.com or troubleshoot from <https://reolink.com/faqs/>.

Get Manual and Software:

You may download the Software and Manual from <https://reolink.com/software-and-manual/>. Software (Mobile App, Windows Client, Mac Client) Manual (QSG, User Manual)

Get Firmware:

You may download the firmware from <https://reolink.com/firmware/>.

Reolink Digital Technology Co.,Ltd
<https://reolink.com>