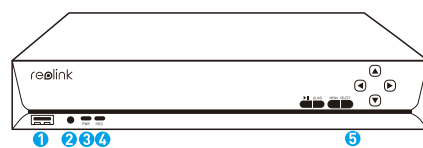




## Quick Start Guide

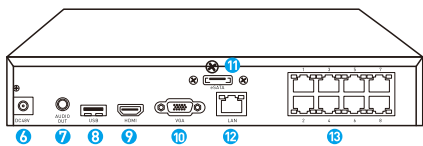
### PoE NVR System

#### Get Started to Know your NVR



##### FRONT VIEW

- |                |              |                  |
|----------------|--------------|------------------|
| 1) USB         | 3) Power LED | 5) Control Panel |
| 2) IR Receiver | 4) HDD LED   |                  |

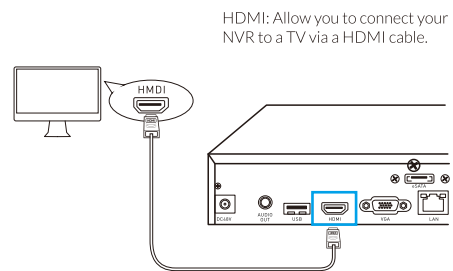


##### REAR VIEW

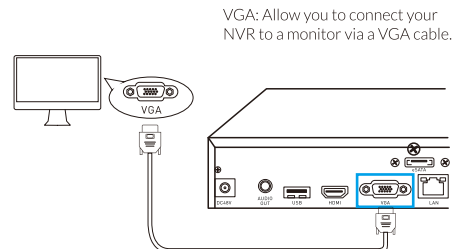
- |              |           |                  |
|--------------|-----------|------------------|
| 6) Power     | 9) HDMI   | 12) LAN          |
| 7) Audio Out | 10) VGA   | 13) Camera Input |
| 8) USB       | 11) eSATA |                  |

1

#### A: Connect your NVR to a HD TV/monitor



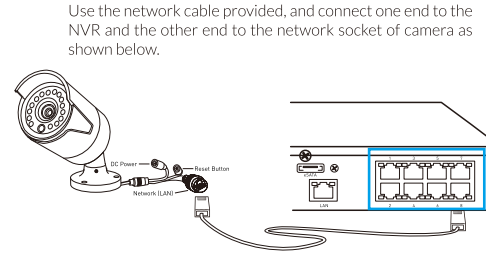
HDMI: Allow you to connect your NVR to a TV via a HDMI cable.



VGA: Allow you to connect your NVR to a monitor via a VGA cable.

#### 1 Connect Your NVR

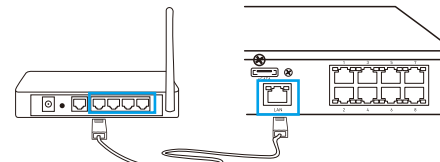
#### B: Connect your NVR to cameras



Use the network cable provided, and connect one end to the NVR and the other end to the network socket of camera as shown below.

#### C: Connect your NVR to network

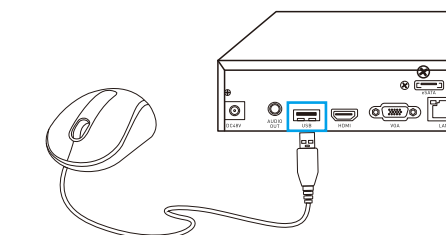
If you want a remote access via your phone/tablet/PC, you need to connect the NVR to the router.



2

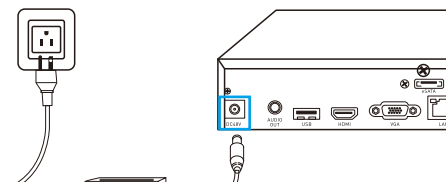
#### D: Connect your NVR to a mouse

You can connect a mouse to your NVR via a USB port in order to better control the NVR.

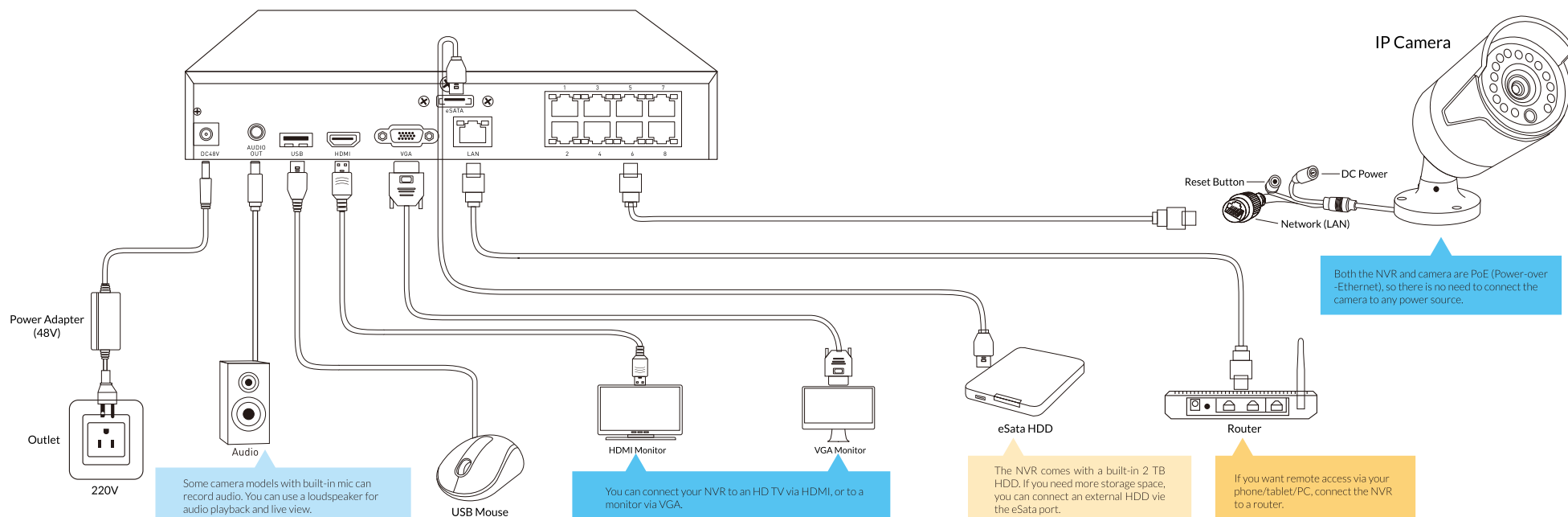


#### E: Connect your NVR to power

Connect the NVR to power supply and turn it on.



#### Connection Diagram



#### 2 Mounting Tips

##### Lighting

- For best results, do not point the camera towards a light source.
- Pointing the camera towards a glass window intending to see outside may result in a poor image because of glare and lighting conditions inside and outside.
- Don't place the camera in a shaded area that is pointing into a well-lit area as this will result in a poor display. The light to the sensor located at the front of the camera needs to be the same as the light at the focal target for best results.
- As the camera uses infrared LEDs to see at night, it's recommended to clean the lens from time to time if the picture degrades.

##### Environment

- Make sure the power connections are not directly exposed to water or moisture and not shielded from other outdoor elements.
- Weatherproof only means that the camera can be exposed to weather such as rain and snow. Weatherproof cameras cannot be submerged under water.
- Do not expose the camera where rain and snow will hit the lens directly.
- Cameras geared for cold weather may work in extreme conditions as low as -25° as the camera produces heat when plugged in.

3

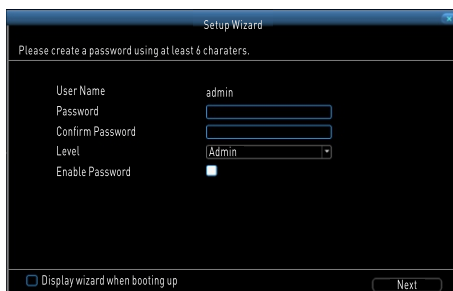
#### 3 System Startup

##### System Startup

During the startup, you will see the below splash screen. System booting up takes a few seconds.



You need to follow the Setup Wizard to set your NVR, click "Next" to continue and at last step, click "Finish" to save your settings.



##### Wizard Setup:

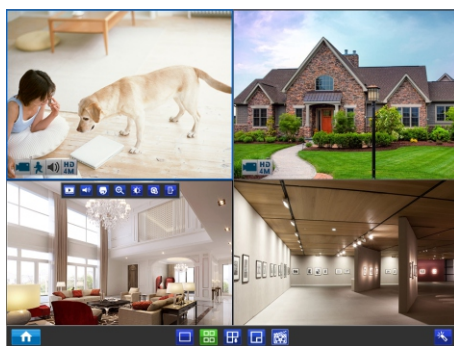
- Create your password
- Setup Language, Video Standard, Resolution, Time Zone, Date Format, Device Name, UID(QR Code)
- HDD Management (Init)
- Network Configuration (DHCP by default)
- Device List
- Email Configuration (Gmail is suggested to use the sender one)

Attention: Please set the correct VIDEO STANDARD and TIME ZONE.

4

#### 4 Live View Screen and Menu Bar

##### Live View Screen and Menu Bar

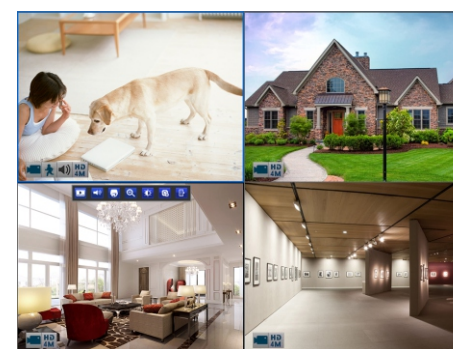


Live View is the NVR's default display mode, and all of your connected cameras are displayed on screen. You may check the status or operation of your NVR and cameras by using the icons and menu bars on the Live View screen.

Right click the mouse on the Live View screen to open the Menu Bar.

- Opens the Main Menu
- Single-camera-view mode
- Four-camera-view mode
- Eight-camera-view mode
- Nine-camera-view mode
- Click this to view the next camera or screen when it's on the single- or four-camera-view mode.
- Click this to enable picture-in-picture mode when viewing multiple cameras. When enabled, one camera will be displayed in full screen while the other camera will be displayed in a small window.
- Click this to do a manual recording.
- Click this to start the Setup Wizard.

5



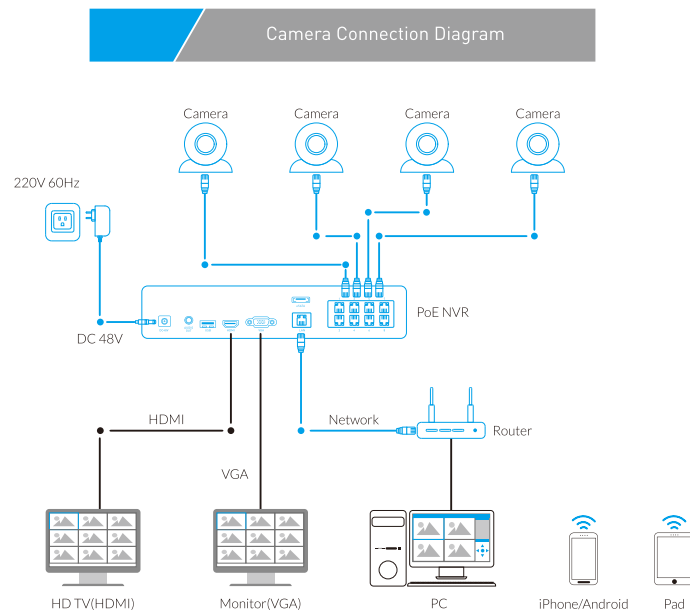
- Playback the video file of the selected channel
- Open Live View audio of the selected channel (to get Audio in live view, you must check the box before RECORDING-->RECORD AUDIO)
- PTZ configuration for RLC-423
- Optical zoom for RLC-411/422/423, and Digital Zoom for RLC-410/420
- Image Settings, including Brightness, Contrast, Saturation, Hue and Sharpen
- Channel Settings, including Camera Name, OSD, Image Setting, Mask, Camera Parameter etc.
- Record
- Motion Detection
- Audio
- Resolution of the Camera

6



## Quick Start Guide

Mobile App



Attention: Have a look at the image(s) on the NVR first before installing the cameras.

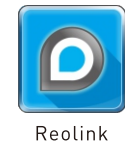
1

Install Reolink APP

To install the Reolink app, search "Reolink" at App Store or Google Play to download it, or you can scan the QR code below to download the app directly.



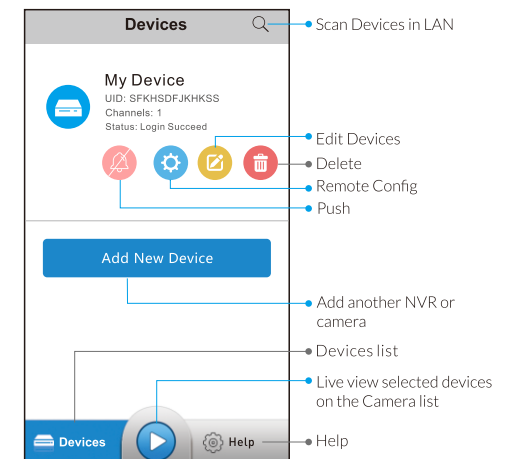
After downloading finished, install and launch the app.



2

Use Reolink APP

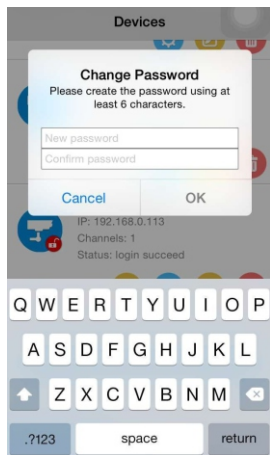
During start-up, you will see the Devices page. The app will automatically show the device list in your LAN (Local Area Network).



3

Create a Password

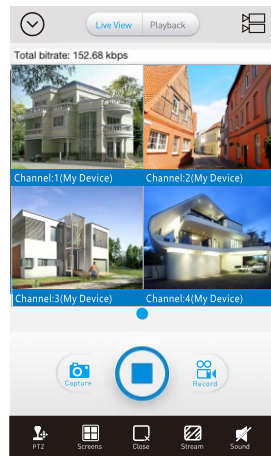
Choose and click the device you want to add. For security consideration, you'd better create a password for the first-time use.



4

Live View

Now you can see the Live View page as below:



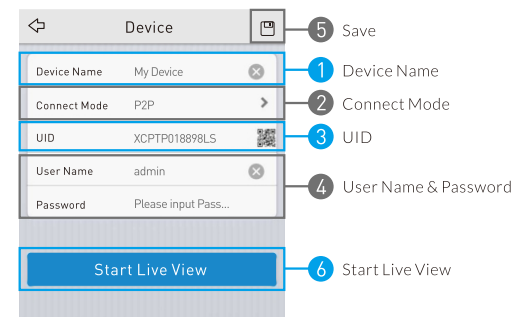
- Live View: Access to Live View mode
- Playback: Remotely playback video recorded on NVR
- Access to Devices list
- Select the Live View cameras
- Show the Live View Page
- Take snapshot and save image to your mobile device
- Stop/Start Live View of the camera
- Record video to your mobile device
- Control PTZ camera (Pan/Tilt/Zoom)
- Choose 1/4/8/16 channel view
- Stop/Start Live View of the selected camera
- Video Live View stream
- Enable/Disable the Audio (audio can be heard only after "RECORD VIDEO" in NVR is enabled)

Snapshot and Record paths on mobile devices are as below by default:  
iPhone/iPad: Photos folder  
Android device: My File / Reolink

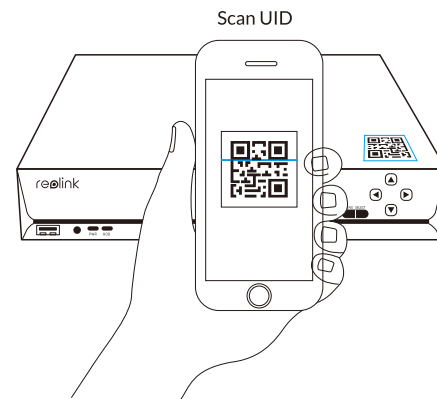
5

Add Device in Different Network

On Device Page, click Add New Device button to add Device. Click Save after all setup is done.



- Device Name: Setup the name of the device in your mobile device
- Connect Mode: Choose the connection mode in P2P or IP/Domain by clicking Arrow behind.
- UID: Click QR code button to scan QR code or directly input the UID.
- User Name and Password
- Save: Save the settings you modified in this page.
- Start Live View: Click to view the device.



You may find UID and QR code on cover of the NVR box, it is a QR Code with 16 alphanumeric characters.



## Welcome to Reolink

To get started, please follow the Quick Start Guide to set up the Reolink mobile app, Client software and hardware.

**Get Support:**  
For technical support, you may send E-mail to [support@reolink.com](mailto:support@reolink.com) or [service@reolink.com](mailto:service@reolink.com).

**Get Manual and Software:**  
You may download the Software and Manual from <https://reolink.com/software-and-manual/>.  
Software (Mobile App, Windows Client, Mac Client)  
Manual (QSG, User Manual)

**Get Firmware:**  
You may download the firmware from <https://reolink.com/firmware/>.

Reolink Digital Technology Co., Ltd  
<https://reolink.com>



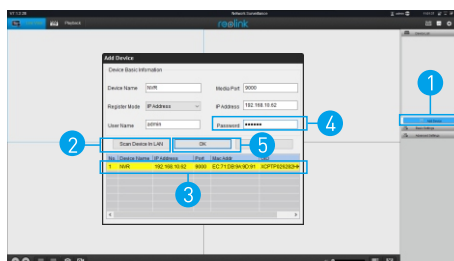
Reolink Client

Client Software

Please install the Reolink Client Software from CD or download the software from <https://reolink.com/software-and-manual/>. Open and run the software.

1 Add Device

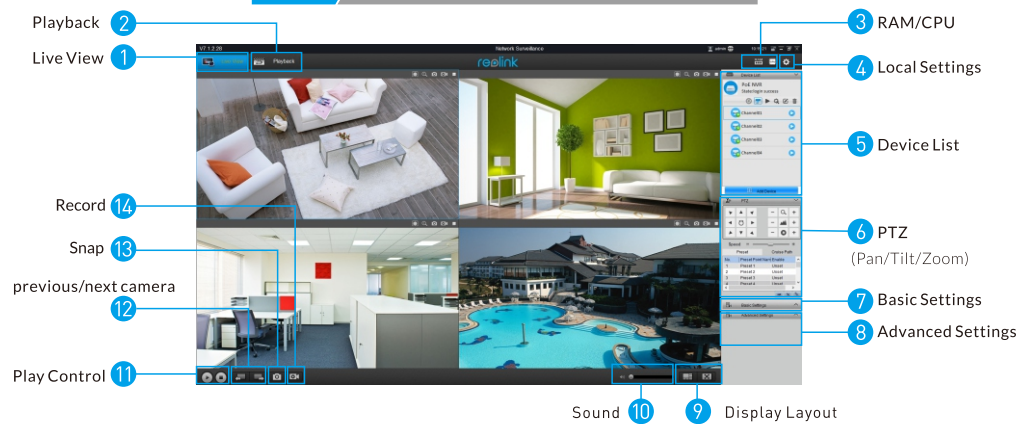
- Add new devices in the Client software.
- Scan Device in Lan and all devices including Reolink NVR and Reolink Cameras connected to the router will be listed here.
- Double click the device you want to add, and then device info will be displayed in the right window.
- Type your password (the default password is black). If you've already created a password on the mobile app or on NVR, you need to use the password you've created to log in.
- Then click OK to log in.



You may also use UID mode to log in. From Register Mode area, select the mode to UID, and then input your UID to the UID field.

2

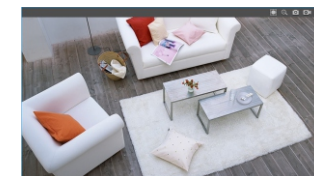
Client UI Introduction



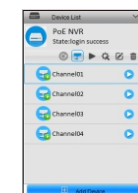
- See Live View of all cameras
- Playback (Local Playback for files recorded in PC, or Remote Playback for files recorded in SD Card/HDD)
- Show the memory and CPU loading
- Set the Record/Download/Capture path in the PC
- Show the Devices connected in the software
- PTZ Control Panel is only for RLC-411/422/423
- Basic Settings of the camera's OSD, ENCODE and IMAGE
- Make advanced settings, like Anti-flicker, Exposure, etc
- Choose 1-36 cameras for Live View and make full screen view without menu bar
- Enable/Disable the sound and adjust the volume of the sound
- Start/Stop all channels' Live View
- Used for single window Live View and you can click to switch to previous/next camera
- Snapshot Live View images (the default path is C:\Capture)
- Record in local PC (the default path is C:\RecordFile)

3

Button Introduction



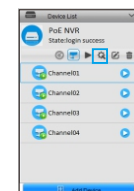
- Center the camera preview
- Digitally zoom out and in the camera preview
- Snapshot Live View images (the default path is C:\Capture)
- Record camera videos in local PC (the default path is C:\RecordFile)
- Start or Stop Live View



- Refresh
- Camera List
- Play/Stop the videos
- Device Settings
- Modify Devices
- Delete the Devices
- Video Definition
- Add a new Reolink device

4

Remote Config



Click the Remote Config icon to get the Device Settings Page:

